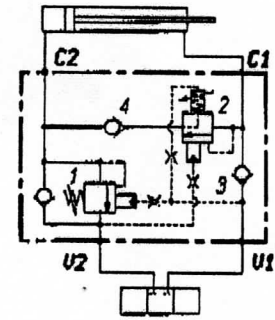
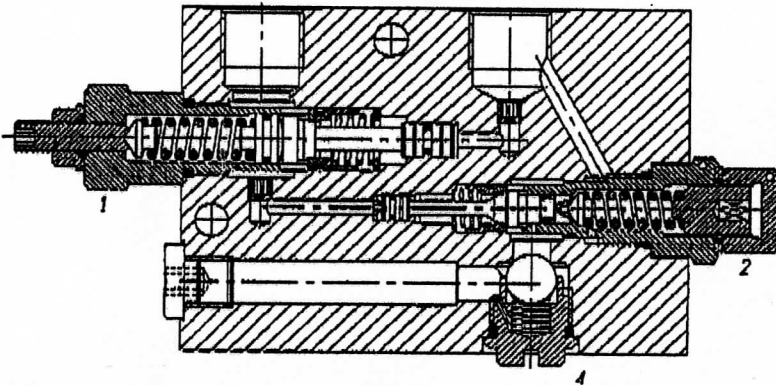
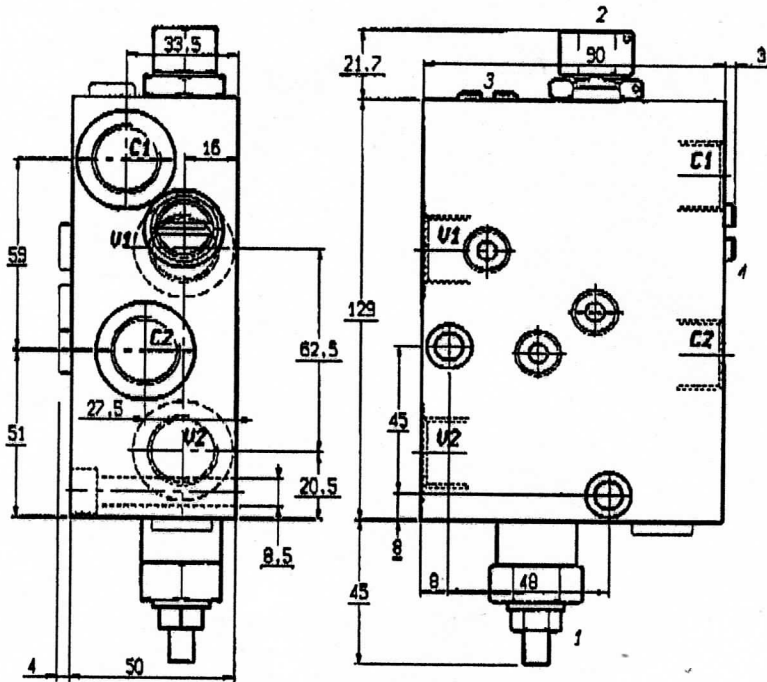




RIGENERATIVI
DUAL PILOT ASSISTED OVERCENTRE VALVES SERIES "30" FOR
REGENERATIVE CIRCUITS

UBSO-DE-CR-30781235-TA-E

05.44.38.03.03.35.90.E



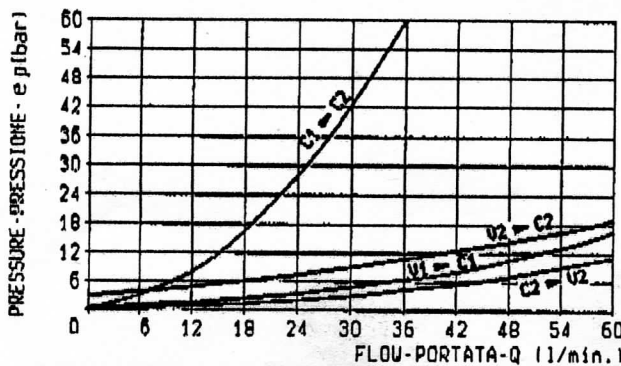
Pressione di lavoro max.
Max. working pressure 130 bar

Portata max.
Flow max. 60 l/min

Peso
Weight. 1.8 Kg

Taratura della valvola: almeno 1,3 volte
superiore alla pressione indotta dal carico
Pressure setting: at least 1,3
times the load induced pressure

Cappuccio per piombatura Codice / Ordering code
Sealing cap N° 11.04.22.002



**RAPPORTO DI PILOTAGGIO
PILOT RATIO**

Val.1 4.2 : 1

Val.2 4 : 1

MOLE/SPRINGS

	Compo taratura min-max bar Adj. press. range bar	Incremento pressione bar/giro vite Pressure increase bar/turn	Taratura bar (Q=5 l/min) Setting bar (made at 5 l/min)	Codice ordinazione Ordering code	Colore Colour
Val.1	100-350	65	210	03.51.01.102	verde green
Val.2	100-430	140	430	03.51.01.198	giallo yellow

ATTACCHI/PORT SIZE

U1 - U2 - C1 - C2

G 1/2